



GeoLytics[®]

CensusCD[®] 2000

Short Form

Blocks

(Release 1.0)

User Guide

Contents

1. Introduction	2
2. Installation	3
3. Five steps to produce files	3
Step A. Selection of File to name the file.	4
Step B. Selection of Area to be covered by the file.	4
Step C. Selection of Counts to be included.	7
Notes about Searching for areas and counts	7
Step D. Running and Viewing the file.	8
4. Using the Map Viewer	10
5. Help	11
6. Contacting GeoLytics	11
Appendix	
CensusCD 2000 Short Form Blocks Data Tables	12

1. Introduction

CensusCD 2000 Short Form Blocks is the first product to contain complete Census 2000 Short Form Blocks data, along with 2000 block map boundaries.

CensusCD 2000 Short Form Blocks incorporates many other value added data items and tools such as calculating population and their characteristics by distance around a point and customized data and map extracts. Imagine popping this CD-ROM into your computer and, without any other software, getting instant maps and fascinating information on your own neighborhood or any of the nation's other geographic areas.

CensusCD 2000 Short Form Blocks is the solution for government business and academic users who need easy and instant access to area statistics and mapping. For existing GIS users, data and maps can be exported as ArcView® shape and MapInfo® MID/MIF files. For non-GIS users, thematic mapping, query capability, and statistical tools are built into a stand-alone sophisticated mapping application that integrates incredibly detailed information. This unique product offers an unparalleled breadth of data and revolutionary technology to extract, create, and export data and maps for any block and community in the nation.

The on-line help contains additional information about selecting, mapping, and exporting data and boundaries. Documentation provided by the Census Bureau about Short Form Blocks data that has been compiled into **Census CD 2000 Short Form Blocks** is also included. A specific Help section to explain the Map Viewer is available from both the main Help Contents and the Map Viewer itself.

Copyright 1996-2002 by GeoLytics, Inc. All rights reserved. No part of this publication may be reproduced, stored in a retrieval system, or transmitted, in any form or by any means, electronic, mechanical, photocopying, recording, or otherwise, without the prior written permission of GeoLytics, Inc. CensusCD is a trademark of GeoLytics, Inc. All other trademarks are the property of their respective holders. CensusCD 2000 Short Form Blocks software license is a single user version only, and the use of any extracted data or maps is restricted to within your own organization.

You must agree to the **End User License Agreement (EULA)** for CensusCD 2000 Short Form Blocks during Setup or the product will not be installed and you will have no right to use the product or resulting data. A copy of this EULA can be found under the Help menu item. You can view a copy of the EULA in advance, **before purchasing** or opening any GeoLytics product, by **downloading** it from the **GeoLytics web site** at: **www.geolytics.com**

January 7, 2002

2. Installation

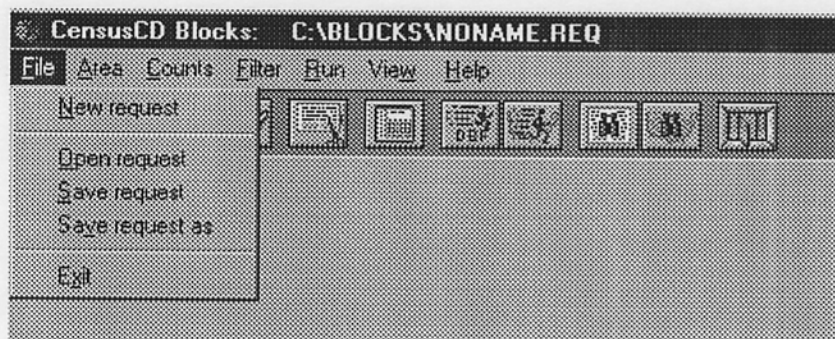
1. Insert the CensusCD 2000 Short Form Blocks CD disk into your CD-ROM drive
2. In the Windows Program Manager, choose Run from the Start Menu
3. Type D:\setup.exe (assuming D is the letter of your CD-ROM drive)
4. Click on OK
5. Follow the on-screen instructions. Note: If you have previously installed CensusCD 2000 Short Form Blocks, un-install it now
6. When prompted, enter your Name, the name of your Organization, and your Serial Number. Type the serial number with no spaces or dashes. It is very important that the number is exact.
7. After installation is done, you can start CensusCD 2000 Short Form Blocks at any time by double clicking on the CensusCD 2000 Short Form Blocks icon or from the Windows "Start" button.

Note: To operate the program, the original CD must be in the same CD-ROM drive from which the program was installed. Otherwise, the program will run, but you will receive errors when running reports.

3. Five Steps to produce Files/Maps:

- A. Selection of **File** to name the file
- B. Selection of **Area** to be covered by the file
- C. Selection of **Counts** to be included
- D. **Running** and **Viewing** the file

Step 3A. Selection of File to name the file



The first thing to do is name your request. You can do this by selecting **New** under the **File** menu. If you omit this step, a file titled "Noname" will be generated for the Request.

Step 3A. Continued

The **File menu commands** let you establish a directory or path for naming and saving your output files. It controls where files will be written and allows you to retrieve previous request parameters.

New Request	Used to start a new series of files and controls the path/name of subsequent files - if you don't use this function all files will be given the default title of "Noname.*"
Open Request	Opens existing, saved requests
Save Request	Saves current request parameters

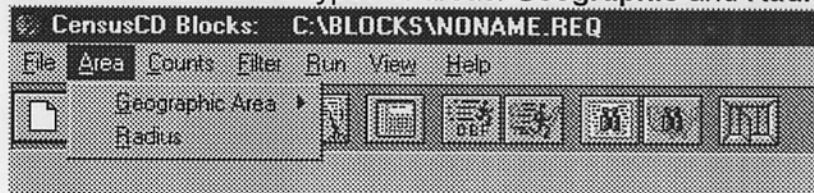
A request tells CensusCD 2000 Short Form Blocks what information you want and how you want it. **The Request File stores information about the Area, Counts, and Filter**, which is passed to the CensusCD 2000 Short Form Blocks database programs to produce a file. A request is built interactively by using CensusCD 2000 Short Form Blocks pull-down menus, lists, and dialogs. The request file can be started as "new", saved for later retrieval, or an existing request file can be opened.


The Request File controls where the file will be written. Changing the drive, directory, or name of the request file will control where the file is produced. For example, if the request file name is changed to "a:myfile.req", then the file can be written as "a:myfile.rpt" (Summary report), "a:myfile.csv" (ASCII), or "a:myfile.dbf" (Dbase output).

You control where the output files are written and what to call them by selecting New Request File or Save Request File and changing the request files drive, directory, and/or name. The request file, and the output file you run from it, will be written to the place you have selected.

Step 3B. Selection of Area to be covered by the file

Select Area menu command. You will see two types of areas: **Geographic** and **Radius**.



Select Geographic Area, or press the  button to display the geographic area screen:

There are 6 levels of geography that Blocks can be selected for:

Nation	State
Region	County
Division	Tract

Step 3B. Continued

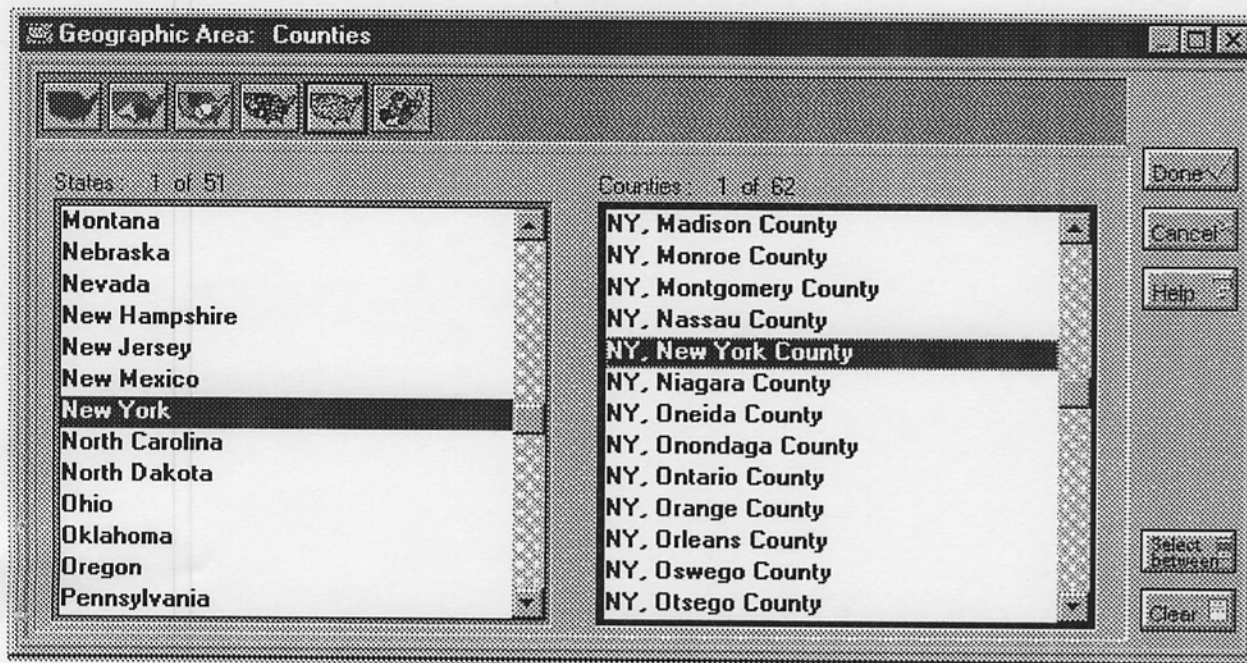
The Geographic area screen will let you easily select blocks at any of the 6 geographic levels. Simply select the geographic area you want from the pull down lists. If you only want Blocks for a specific tract within a county that you have selected, see the description of the Filter function below.

You can select any area and up to 240 areas of the same type. For example, several states like Texas, Arizona and Ohio or a number of Counties like Bronx, Kings, and Queens in New York could be selected.


For example:

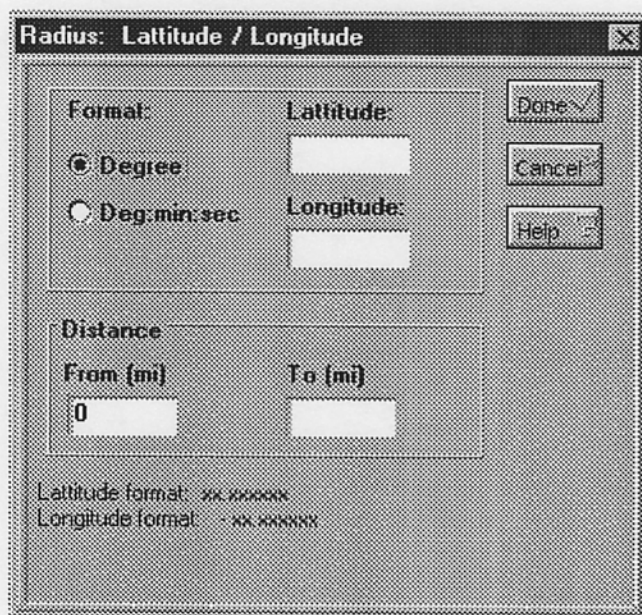
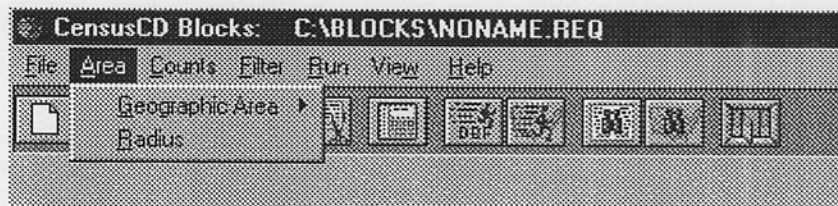
Lets pick Manhattan as the area we want Block information for. To select Manhattan (New York County) as the area, we would:

- (1) Select the menu item AREA
- (2) Select GEOGRAPHIC AREA from the pull-down list that will appear
- (3) Select Counties as the Geographic Area
- (4) In the Geographic Areas window that will appear, select NEW YORK as the state
- (5) Select NEW YORK as the county as well
- (6) Select DONE




Step 3B. Continued

The second type of area is  **Radius** (circular area). You may decide to use this type of area view to get information for what's around a specific location. Use an exact **Latitude** and **Longitude** to specify the center of the Radius. Then, enter the distance from the center of the radius to specify the radial area size (for example, 20 miles from a specific location).

A dialog box titled 'Radius: Latitude / Longitude'. It contains two main sections. The first section is for specifying the center location, with 'Format' set to 'Degree' (selected) and 'Deg:min:sec' (unselected). There are input fields for 'Latitude:' and 'Longitude:'. The second section is for specifying the distance, with 'From (mi)' set to '0' and 'To (mi)' as an empty field. On the right side, there are three buttons: 'Done' (with a checkmark), 'Cancel', and 'Help'. At the bottom, there are labels for 'Latitude format: XX.XXXXXX' and 'Longitude format: -XX.XXXXXX'.

Step 3C. Selection of Counts to be Included

Next, specify census counts to include in your file. In other words, "what information are you interested in?" **Counts are the actual block demographic and block geographic identification data that you want to know.**

Any of the 3000+ counts available can be selected using  counts. **See the Appendix for descriptions of all data tables.**

Selecting Demographics:

Lets pick Mean Housing Value as the demographic information we want for each Block:

- (1) Select the menu item COUNTS
- (2) Select the **group** you want; Geographic Identifiers, Pop, and Household
- (3) In the window that appears with all demographics, scroll down and select the demographics you want
- (4) Select DONE

While in the tailored counts screen, simply select the demographics you want. You know a count is selected when you see its short description in the "selected" window. Tagging the first and last counts in this series and then tagging the "Select Between" button can select a series of counts.

Searching for Geographic Areas and Counts:

There are search functions that will help you to find the geographic areas you are looking for or the demographics you are looking for. Both will search through the complete lists of areas, or counts, and return a list that matches the search word you entered.

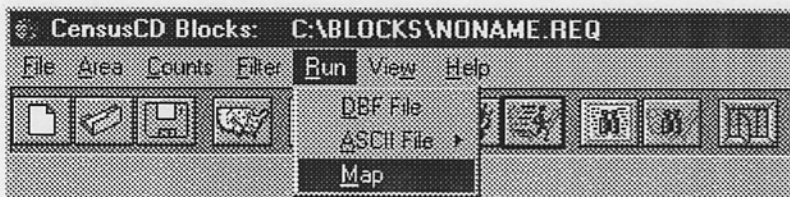
Step 3D. Running and Viewing the file



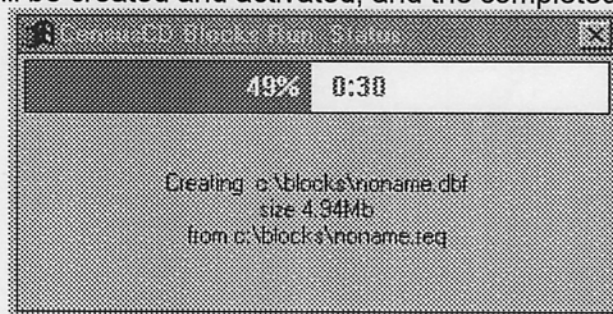
The last step is to run the file. First, choose **Summary ASCII**, **.DBF**, or **Map**.

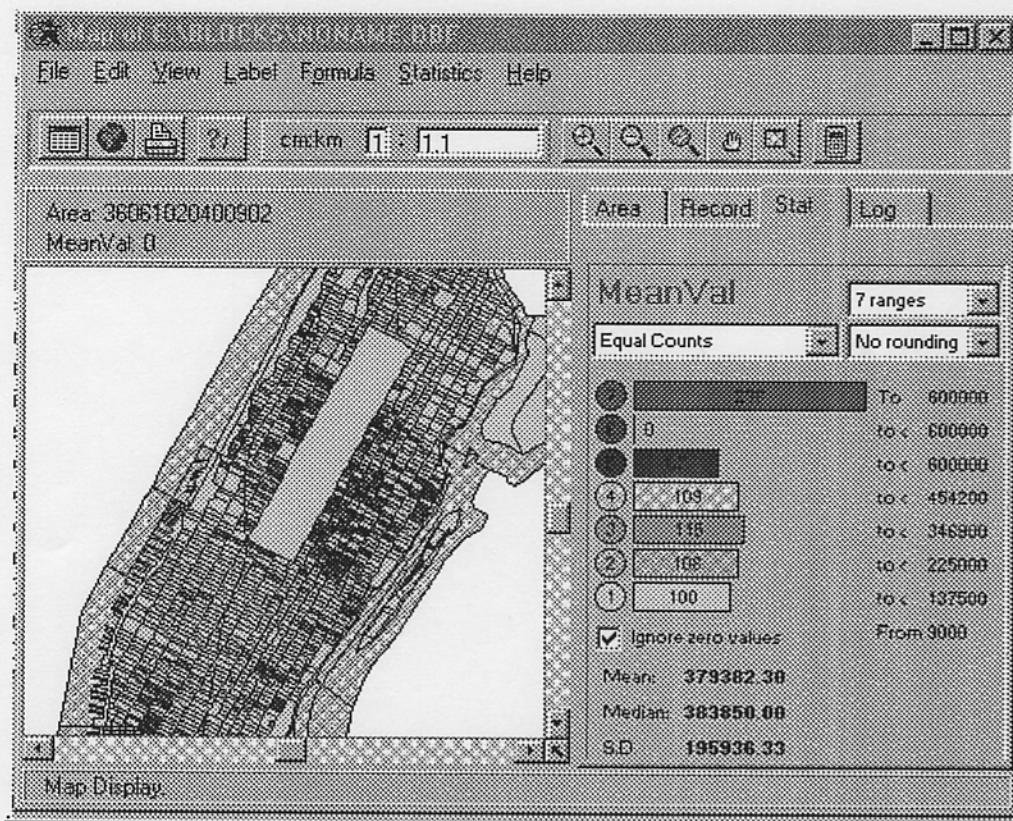
For example, lets map it:

- (1) Select the menu item **RUN**
- (2) Select **MAP**



The file run is done in a multitasking mode so that you can go on selecting other files, or doing other tasks, while the system continues to access the database for the information you requested. When the file is completed, a viewer/map window will be created and activated, and the completed file will be displayed or mapped.





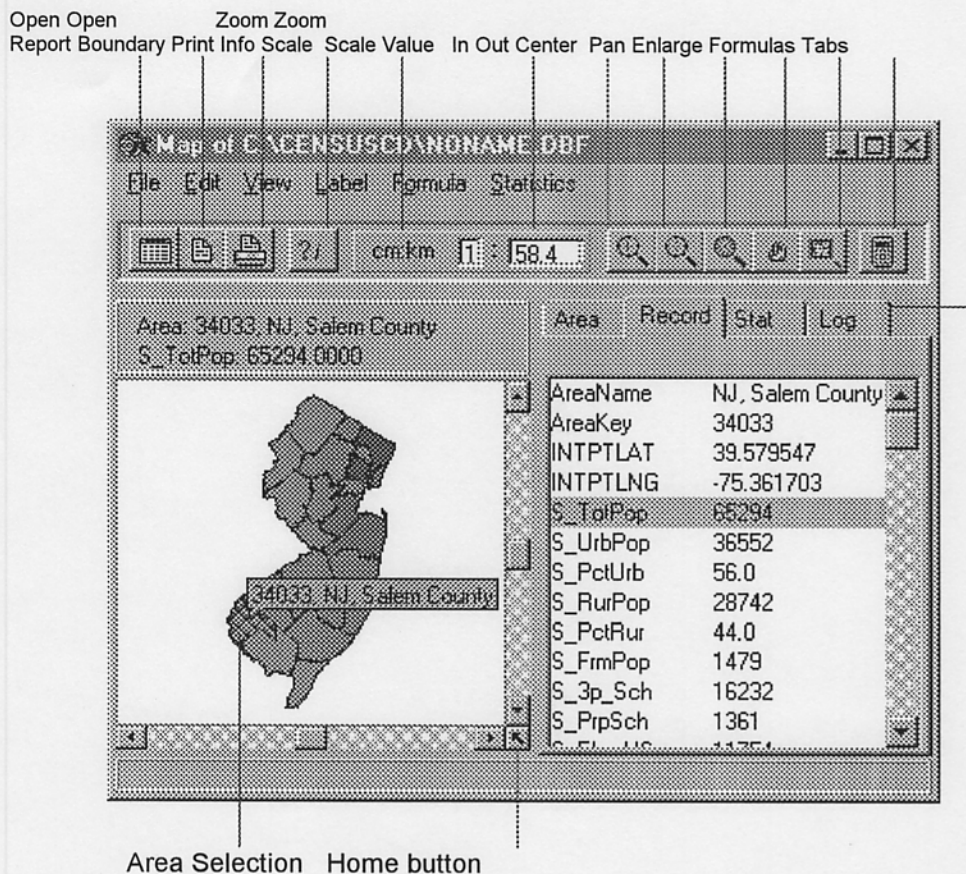
 You can view any file using the **CensusCD 2000 Short Form Blocks** viewer. While browsing the file, you can search for information, copy to clipboard, or print the file.

Finally, you can use the file data as an input to other systems like **statistical** (e.g. SAS, SPSS), **database** (e.g. Access, Oracle), **spreadsheet** (e.g. Excel, 1-2-3), or **mapping** (e.g. ArcView, MapInfo) packages.

4. Using the Map Viewer

Within the Map Viewer you can change data themes, ranges, and color schemes on the fly. It allows you to print your map with options to save it as a .bmp file, which can be imported or pasted into most word processing, spreadsheet, and graphics packages. **CensusCD 2000 Short Form Blocks** also lets you export boundaries and data in desktop mapping formats (ArcView or MapInfo). There is even a variable calculator for creating and displaying virtual variables based on data in your file.

HINT: You can even use the Map Viewer to display your own .DBF data files if you have a Geographic key column (15 digit character) which lets the program match Geographic boundaries to your data records. See the Map Guide under Help for more information on how to display your own .DBF files.



A specific help section to explain the map viewer is available from both the main help contents and the Map Viewer itself.

5. Help

CensusCD 2000 Short Form Blocks contains extensive on-line help. On the main menu, select help. Under help select “contents”. You may rely on “**automatic advice**” located on the bottom of the screen for “next step” prompting. Placing the focus on the item in question, and pressing the F1 key can also request help.

The on-line help contains additional information about selecting, mapping, and exporting Geographic data and boundaries. Documentation provided by the creators of the data compiled into **CensusCD 2000 Short Form Blocks** is also included. A specific help section to explain the map viewer is available from both the main help contents and the Map Viewer itself.

6. Contacting GeoLytics, Inc.

Web Site:	http://www.Geolytics.com
E-Mail:	info@Geolytics.com
Sales & Customer Support:	1-800-577-6717
Tech Support:	support@Geolytics.com
Fax:	1-732-651-2721
Mail:	GeoLytics, Inc. PO Box 10 East Brunswick, NJ 08816

Appendix. CensusCD 2000 Short Form Blocks Data Tables

Short Name Description

GEOID	GEOGRAPHIC IDENTIFIERS
P001	TOTAL POPULATION
P002	URBAN AND RURAL
P003	RACE
P004	HISPANIC AND NOT HISPANIC BY RACE
P005	RACE FOR POP 18+
P006	HISPANIC AND NOT HISPANIC BY RACE FOR POP 18+
P007	RACE
P008	HISPANIC BY RACE
P009	RACE (TOTAL RACES TALLIED)
P010	HISPANIC BY RACE (TOTAL RACES TALLIED)
P011	HISPANIC
P012	SEX BY AGE
P013	MEDIAN AGE BY SEX (1 DEC)
P014	SEX BY AGE FOR POP UNDER 20 YEARS
P015	HOUSEHOLDS
P016	POP IN HHS
P017	AVG HH SIZE (2 DEC)
P018	HH SIZE, HH TYPE, AND PRESENCE OF OWN CHILDS
P019	HHS BY PRESENCE OF PEOPLE 0-17 BY HH TYPE
P020	HHS BY AGE OF HHER BY HH TYPE (INC LIVING ALONE) BY PRESENCE OF OWN CHILDS
P021	HH TYPE BY AGE OF HHER
P022	HHS BY PRESENCE OF PEOPLE 60+ , HH SIZE, & HH TYPE
P023	HHS BY PRESENCE OF PEOPLE 65+ , HH SIZE, & HH TYPE
P024	HHS BY PRESENCE OF PEOPLE 75+ , HH SIZE, & HH TYPE
P025	HHS BY PRESENCE OF NONRELATIVES
P026	HH TYPE BY HH SIZE
P027	RELATIONSHIP BY HH TYPE (INC LIVING ALONE)
P028	RELATIONSHIP BY HH TYPE FOR POP 0-17
P029	RELATIONSHIP BY AGE FOR POP 0-17
P030	RELATIONSHIP BY HH TYPE (INC LIVING ALONE) FOR POP 65+
P031	FAMILIES
P032	POP IN FAMILIES
P033	AVG FAMILY SIZE (2 DEC)
P034	FAMILY TYPE BY PRESENCE & AGE OF OWN CHILDS
P035	FAMILY TYPE BY PRESENCE & AGE OF RELATED CHILDS
P036	OWN CHILDS 0-17 BY FAMILY TYPE & AGE
P037	GROUP QUARTERS POP BY GROUP QUARTERS TYPE
P038	GROUP QUARTERS POP BY SEX BY AGE BY GROUP QUARTERS TYPE
P039	POP SUBSTITUTED
P040	IMPUTATION OF POP ITEMS
P041	IMPUTATION OF RACE
P042	IMPUTATION OF HISPANIC
P043	IMPUTATION OF SEX
P044	IMPUTATION OF AGE
P045	IMPUTATION OF RELATIONSHIP
P012A	SEX BY AGE (WHITE ALONE)
P012B	SEX BY AGE (BLACK ALONE)
P012C	SEX BY AGE (NATIVE AMERICAN ALONE)

User Guide for CensusCD 2000 Short Form Blocks – Published by GeoLytics, Inc.

P012D SEX BY AGE (ASIAN ALONE)
 P012E SEX BY AGE (PACIFIC ISLANDER ALONE)
 P012F SEX BY AGE (SOME OTHER RACE ALONE)
 P012G SEX BY AGE (TWO OR MORE RACES)
 P012H SEX BY AGE (HISPANIC)
 P012I SEX BY AGE (WHITE ALONE, NOT HISPANIC)
 P013A MEDIAN AGE BY SEX (WHITE ALONE) (1 DEC)
 P013B MEDIAN AGE BY SEX (BLACK ALONE) (1 DEC)
 P013C MEDIAN AGE BY SEX (NATIVE AMERICAN ALONE) (1 DEC)
 P013D MEDIAN AGE BY SEX (ASIAN ALONE) (1 DEC)
 P013E MEDIAN AGE BY SEX (PACIFIC ISLANDER ALONE) (1 DEC)
 P013F MEDIAN AGE BY SEX (SOME OTHER RACE ALONE) (1 DEC)
 P013G MEDIAN AGE BY SEX (TWO OR MORE RACES) (1 DEC)
 P013H MEDIAN AGE BY SEX (HISPANIC) (1 DEC)
 P013I MEDIAN AGE BY SEX (WHITE ALONE, NOT HISPANIC) (1 DEC)
 P015A HHS (WHITE ALONE HHER)
 P015B HHS (BLACK ALONE HHER)
 P015C HHS (NATIVE AMERICAN ALONE HHER)
 P015D HHS (ASIAN ALONE HHER)
 P015E HHS (PACIFIC ISLANDER ALONE HHER)
 P015F HHS (SOME OTHER RACE ALONE HHER)
 P015G HHS (2+ RACES HHER)
 P015H HHS (HISPANIC HHER)
 P015I HHS (WHITE ALONE, NOT HISPANIC HHER)
 P016A POP IN HHS (WHITE ALONE HHER)
 P016B POP IN HHS (BLACK ALONE HHER)
 P016C POP IN HHS (NATIVE AMERICAN ALONE HHER)
 P016D POP IN HHS (ASIAN ALONE HHER)
 P016E POP IN HHS (PACIFIC ISLANDER ALONE HHER)
 P016F POP IN HHS (SOME OTHER RACE ALONE HHER)
 P016G POP IN HHS (TWO OR MORE RACES HHER)
 P016H POP IN HHS (HISPANIC HHER)
 P016I POP IN HHS (WHITE ALONE, NOT HISPANIC HHER)
 P017A AVG HH SIZE (WHITE ALONE HHER) (2 DEC)
 P017B AVG HH SIZE (BLACK ALONE HHER) (2 DEC)
 P017C AVG HH SIZE (NATIVE AMERICAN ALONE HHER) (2 DEC)
 P017D AVG HH SIZE (ASIAN ALONE HHER) (2 DEC)
 P017E AVG HH SIZE (PACIFIC ISLANDER ALONE HHER) (2 DEC)
 P017F AVG HH SIZE (SOME OTHER RACE ALONE HHER) (2 DEC)
 P017G AVG HH SIZE (TWO OR MORE RACES HHER) (2 DEC)
 P017H AVG HH SIZE (HISPANIC HHER) (2 DEC)
 P017I AVG HH SIZE (WHITE ALONE, NOT HISPANIC HHER) (2 DECS)
 P026A HH TYPE BY HH SIZE (WHITE ALONE HHER)
 P026B HH TYPE BY HH SIZE (BLACK ALONE HHER)
 P026C HH TYPE BY HH SIZE (NATIVE AMERICAN ALONE HHER)
 P026D HH TYPE BY HH SIZE (ASIAN ALONE HHER)
 P026E HH TYPE BY HH SIZE (PACIFIC ISLANDER ALONE HHER)
 P026F HH TYPE BY HH SIZE (SOME OTHER RACE ALONE HHER)
 P026G HH TYPE BY HH SIZE (TWO OR MORE RACES HHER)
 P026H HH TYPE BY HH SIZE (HISPANIC HHER)
 P026I HH TYPE BY HH SIZE (WHITE ALONE, NOT HISPANIC HHER)
 P027A RELATIONSHIP BY HH TYPE (INC LIVING ALONE) (WHITE ALONE)
 P027B RELATIONSHIP BY HH TYPE (INC LIVING ALONE) (BLACK ALONE)
 P027C RELATIONSHIP BY HH TYPE (INC LIVING ALONE) (Native American ALONE)
 P027D RELATIONSHIP BY HH TYPE (INC LIVING ALONE) (ASIAN ALONE)
 P027E RELATIONSHIP BY HH TYPE (INC LIVING ALONE) (PACIFIC ISLANDER ALONE)
 P027F RELATIONSHIP BY HH TYPE (INC LIVING ALONE) (SOME OTHER RACE ALONE)
 P027G RELATIONSHIP BY HH TYPE (INC LIVING ALONE) TWO OR MORE RACES)
 P027H RELATIONSHIP BY HH TYPE (INC LIVING ALONE) (HISPANIC)
 P027I RELATIONSHIP BY HH TYPE (INC LIVING ALONE) (WHITE ALONE, NOT HISPANIC)
 P028A RELATIONSHIP BY HH TYPE FOR POP 0-17 (WHITE ALONE)

User Guide for CensusCD 2000 Short Form Blocks – Published by GeoLytics, Inc.

P028B RELATIONSHIP BY HH TYPE FOR POP 0-17 (BLACK ALONE)
P028C RELATIONSHIP BY HH TYPE FOR POP 0-17 (NATIVE AMERICAN ALONE)
P028D RELATIONSHIP BY HH TYPE FOR POP 0-17 (ASIAN ALONE)
P028E RELATIONSHIP BY HH TYPE FOR POP 0-17 (PACIFIC ISLANDER ALONE)
P028F RELATIONSHIP BY HH TYPE FOR POP 0-17 (SOME OTHER RACE ALONE)
P028G RELATIONSHIP BY HH TYPE FOR POP 0-17 (TWO OR MORE RACES)
P028H RELATIONSHIP BY HH TYPE FOR POP 0-17 YEARS (HISPANIC)
P028I RELATIONSHIP BY HH TYPE FOR POP 0-17 (WHITE ALONE, NOT HISPANIC)
P030A RELATIONSHIP BY HH TYPE (INC LIVING ALONE) FOR POP 65+ (WHITE ALONE)
P030B RELATIONSHIP BY HH TYPE (INC LIVING ALONE) FOR POP 65+ (BLACK)
P030C RELATIONSHIP BY HH TYPE (INC LIVING ALONE) FOR POP 65+ (NATIVE AMERICAN)
P030D RELATIONSHIP BY HH TYPE (INC LIVING ALONE) FOR POP 65+ (ASIAN ALONE)
P030E RELATIONSHIP BY HH TYPE (INC LIVING ALONE) FOR POP 65+ (PACIFIC ISLANDER)
P030F RELATIONSHIP BY HH TYPE (INC LIVING ALONE) FOR POP 65+ (SOME OTHER RACE ALONE)
P030G RELATIONSHIP BY HH TYPE (INC LIVING ALONE) FOR POP 65+ (TWO OR MORE RACES)
P030H RELATIONSHIP BY HH TYPE (INC LIVING ALONE) FOR POP 65+ (HISPANIC)
P030I RELATIONSHIP BY HH TYPE (INC LIVING ALONE) FOR POP 65+ (WHITE ALONE, NOT HISPANIC)
P031A FAMILIES (WHITE ALONE HHER)
P031B FAMILIES (BLACK ALONE HHER)
P031C FAMILIES (NATIVE AMERICAN ALONE HHER)
P031D FAMILIES (ASIAN ALONE HHER)
P031E FAMILIES (PACIFIC ISLANDER ALONE HHER)
P031F FAMILIES (SOME OTHER RACE ALONE HHER)
P031G FAMILIES (TWO OR MORE RACES HHER)
P031H FAMILIES (HISPANIC HHER)
P031I FAMILIES (WHITE ALONE, NOT HISPANIC HHER)
P032A POP IN FAMILIES (WHITE ALONE HHER)
P032B POP IN FAMILIES (BLACK ALONE HHER)
P032C POP IN FAMILIES (NATIVE AMERICAN ALONE HHER)
P032D POP IN FAMILIES (ASIAN ALONE HHER)
P032E POP IN FAMILIES (PACIFIC ISLANDER ALONE HHER)
P032F POP IN FAMILIES (SOME OTHER RACE ALONE HHER)
P032G POP IN FAMILIES (TWO OR MORE RACES HHER)
P032H POP IN FAMILIES (HISPANIC HHER)
P032I POP IN FAMILIES (WHITE ALONE, NOT HISPANIC HHER)
P033A AVG FAMILY SIZE (WHITE ALONE HHER) (2 DEC)
P033B AVG FAMILY SIZE (BLACK ALONE HHER) (2 DEC)
P033C AVG FAMILY SIZE (NATIVE AMERICAN ALONE HHER) (2 DEC)
P033D AVG FAMILY SIZE (ASIAN ALONE HHER) (2 DEC)
P033E AVG FAMILY SIZE (PACIFIC ISLANDER ALONE HHER) (2 DEC)
P033F AVG FAMILY SIZE (SOME OTHER RACE ALONE HHER) (2 DEC)
P033G AVG FAMILY SIZE (TWO OR MORE RACES HHER) (2 DEC)
P033H AVG FAMILY SIZE (HISPANIC HHER) (2 DEC)
P033I AVG FAMILY SIZE (WHITE ALONE, NOT HISPANIC HHER) (2 DEC)
P034A FAMILY TYPE BY PRESENCE & AGE OF OWN CHILDS (WHITE ALONE HHER)
P034B FAMILY TYPE BY PRESENCE & AGE OF OWN CHILDS (BLACK ALONE HHER)
P034C FAMILY TYPE BY PRESENCE & AGE OF OWN CHILDS (NATIVE AMERICAN ALONE HHER)
P034D FAMILY TYPE BY PRESENCE & AGE OF OWN CHILDS (ASIAN ALONE HHER)
P034E FAMILY TYPE BY PRESENCE & AGE OF OWN CHILDS (PACIFIC ISLANDER ALONE HHER)
P034F FAMILY TYPE BY PRESENCE & AGE OF OWN CHILDS (SOME OTHER RACE ALONE HHER)
P034G FAMILY TYPE BY PRESENCE & AGE OF OWN CHILDS (TWO OR MORE RACES HHER)
P034H FAMILY TYPE BY PRESENCE & AGE OF OWN CHILDS (HISPANIC HHER)
P034I FAMILY TYPE BY PRESENCE & AGE OF OWN CHILDS (WHITE ALONE, NOT HISPANIC HHER)
P035A FAMILY TYPE BY PRESENCE & AGE OF RELATED CHILDS (WHITE ALONE HHER)
P035B FAMILY TYPE BY PRESENCE & AGE OF RELATED CHILDS (BLACK ALONE HHER)
P035C FAMILY TYPE BY PRESENCE & AGE OF RELATED CHILDS (NATIVE AMERICAN ALONE HHER)
P035D FAMILY TYPE BY PRESENCE & AGE OF RELATED CHILDS (ASIAN ALONE HHER)
P035E FAMILY TYPE BY PRESENCE & AGE OF RELATED CHILDS (PACIFIC ISLANDER ALONE HHER)
P035F FAMILY TYPE BY PRESENCE & AGE OF RELATED CHILDS (SOME OTHER RACE ALONE HHER)
P035G FAMILY TYPE BY PRESENCE & AGE OF RELATED CHILDS (TWO OR MORE RACES HHER)
P035H FAMILY TYPE BY PRESENCE & AGE OF RELATED CHILDS (HISPANIC HHER)

User Guide for CensusCD 2000 Short Form Blocks – Published by GeoLytics, Inc.

P035I FAMILY TYPE BY PRESENCE & AGE OF RELATED CHILDS (WHITE ALONE, NOT HISPANIC HHER)
H001 HOUSING UNITS (HU)
H002 URBAN AND RURAL
H003 OCCUPANCY STATUS
H004 TENURE
H005 VACANCY STATUS
H006 RACE OF HHER
H007 HISPANIC HHER BY RACE OF HHER
H008 TOTAL RACES TALLIED FOR HHES
H009 HISPANIC BY TOTAL RACES TALLIED FOR HHES
H010 TOTAL POP IN OCC HU
H011 TOTAL POP IN OCC HU BY TENURE
H012 AVG HH SIZE OF OCC HU BY TENURE (2 DEC)
H013 HH SIZE
H014 TENURE BY RACE OF HHER
H015 TENURE BY HH SIZE
H016 TENURE BY AGE OF HHER
H017 TENURE BY HH TYPE (INC LIVING ALONE) BY AGE OF HHER [69]
H018 OCC HU SUBSTITUTED
H019 IMPUTATION OF VACANCY STATUS
H020 IMPUTATION OF TENURE
H011A TOTAL POP IN OCC HU BY TENURE (WHITE ALONE HHER)
H011B TOTAL POP IN OCC HU BY TENURE (BLACK ALONE HHER)
H011C TOTAL POP IN OCC HU BY TENURE (NATIVE AMERICAN ALONE HHER)
H011D TOTAL POP IN OCC HU BY TENURE (ASIAN ALONE HHER)
H011E TOTAL POP IN OCC HU BY TENURE (PACIFIC ISLANDER ALONE HHER)
H011F TOTAL POP IN OCC HU BY TENURE (SOME OTHER RACE ALONE HHER)
H011G TOTAL POP IN OCC HU BY TENURE (TWO OR MORE RACES HHER)
H011H TOTAL POP IN OCC HU BY TENURE (HISPANIC HHER)
H011I TOTAL POP IN OCC HU BY TENURE (WHITE ALONE, NOT HISPANIC HHER)
H012A AVG HH SIZE OF OCC HU BY TENURE (WHITE ALONE HHER) (2 DEC)
H012B AVG HH SIZE OF OCC HU BY TENURE (BLACK ALONE HHER)
H012C AVG HH SIZE OF OCC HU BY TENURE (NATIVE AMERICAN ALONE HHER)
H012D AVG HH SIZE OF OCC HU BY TENURE (ASIAN ALONE HHER) (2 DEC)
H012E AVG HH SIZE OF OCC HU BY TENURE (PACIFIC ISLANDER ALONE HHER)
H012F AVG HH SIZE OF OCC HU BY TENURE (SOME OTHER RACE ALONE HHER) (2 DEC)
H012G AVG HH SIZE OF OCC HU BY TENURE (TWO OR MORE RACES HHER) (2 DEC)
H012H AVG HH SIZE OF OCC HU BY TENURE (HISPANIC HHER) (2 DEC)
H012I AVG HH SIZE OF OCC HU BY TENURE (WHITE ALONE, NOT HISPANIC HHER)
H015A TENURE BY HH SIZE (WHITE ALONE HHER)
H015B TENURE BY HH SIZE (BLACK ALONE HHER)
H015C TENURE BY HH SIZE (NATIVE AMERICAN ALONE HHER)
H015D TENURE BY HH SIZE (ASIAN ALONE HHER)
H015E TENURE BY HH SIZE (PACIFIC ISLANDER ALONE HHER)
H015F TENURE BY HH SIZE (SOME OTHER RACE ALONE HHER)
H015G TENURE BY HH SIZE (TWO OR MORE RACES HHER)
H015H TENURE BY HH SIZE (HISPANIC HHER)
H015I TENURE BY HH SIZE (WHITE ALONE, NOT HISPANIC HHER)
H016A TENURE BY AGE OF HHER (WHITE ALONE HHER)
H016B TENURE BY AGE OF HHER (BLACK ALONE HHER)
H016C TENURE BY AGE OF HHER (NATIVE AMERICAN ALONE HHER)
H016D TENURE BY AGE OF HHER (ASIAN ALONE HHER)
H016E TENURE BY AGE OF HHER (PACIFIC ISLANDER ALONE HHER)
H016F TENURE BY AGE OF HHER (SOME OTHER RACE ALONE HHER)
H016G TENURE BY AGE OF HHER (TWO OR MORE RACES HHER)
H016H TENURE BY AGE OF HHER (HISPANIC HHER)
H016I TENURE BY AGE OF HHER (WHITE ALONE, NOT HISPANIC HHER)

-End of User Guide for CensusCD 2000 Short Form Blocks-